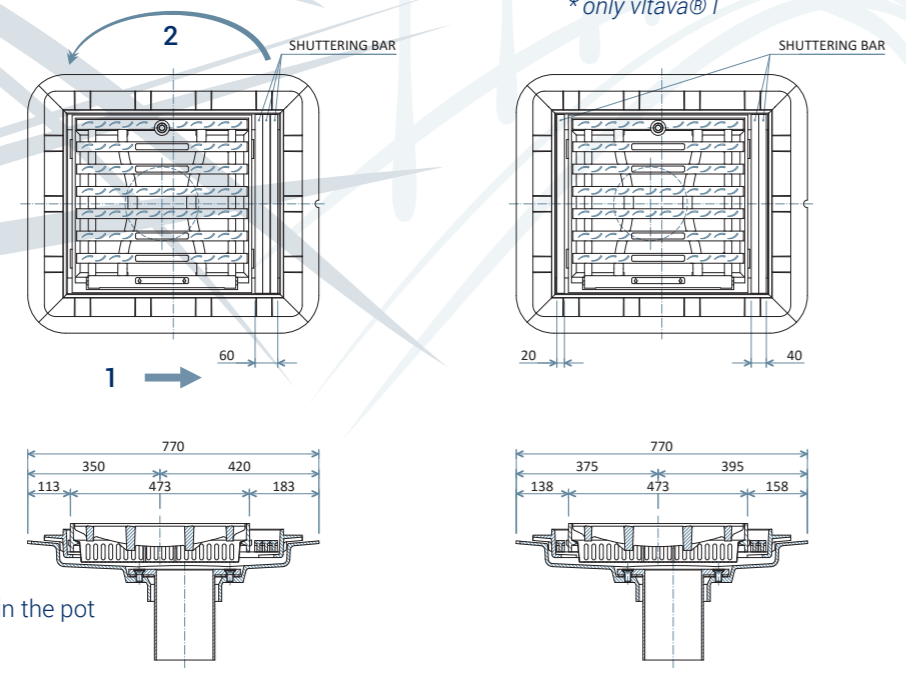
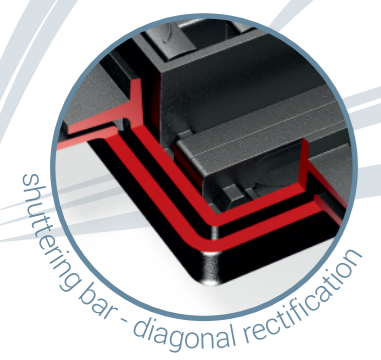


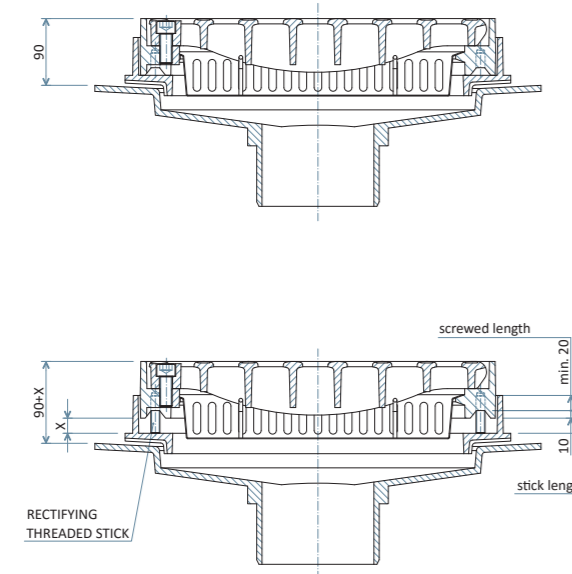
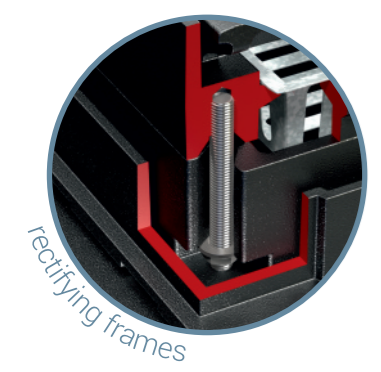
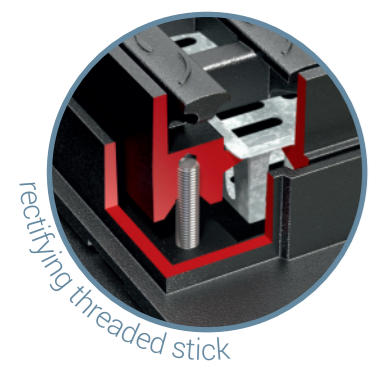
CROSS RECTIFICATION

*only vltava@I



- Cross rectification procedure:**
1. moving of frame with grate along skids in the pot
 2. filling of gap with shuttering bars

HEIGHT RECTIFICATION



- BASE HEIGHT**
base distance between top of grate and rim of plate
- vltava@I - 45 mm
 - vltava@II - 90 mm

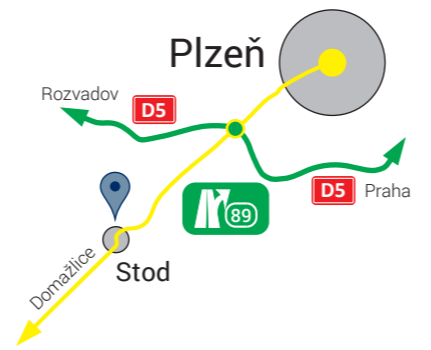
- RECTIFICATION 0-50 mm**
- via threaded sticks M12
 - stick must be screwed in the frame at least 20 mm
 - stick can be shortened

- RECTIFICATION >50 mm**
- combination of threaded sticks M12 and rectifying frames
 - only frames and underlays for drainer vltava@I
 - can not be combined with sticks



CONTACTS

VLČEK SOLUTION s.r.o.
Strojnická 289
333 01 Stod u Plzně
Czech Republic



VLČEK SOLUTION
www.vlcek.cz export@vlcek.cz

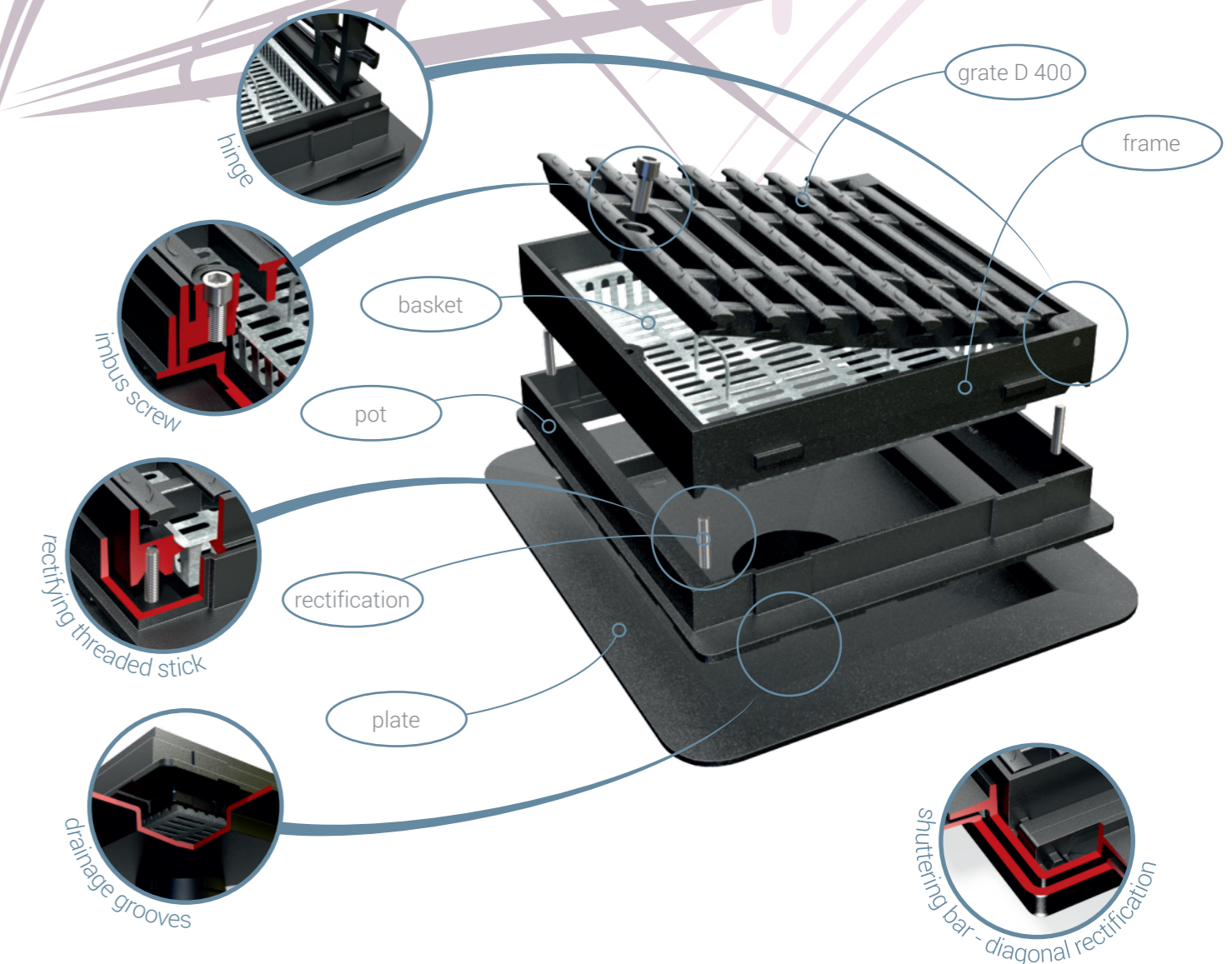
PARTNER

KOGA Bau s.r.o.
Podunajská ulica 23/D
Bratislava 821 06

KOGABAU
www.kogabau.sk



BRIDGE DRAIN vltava® 500x500 WITH GRATE ON THE HINGE

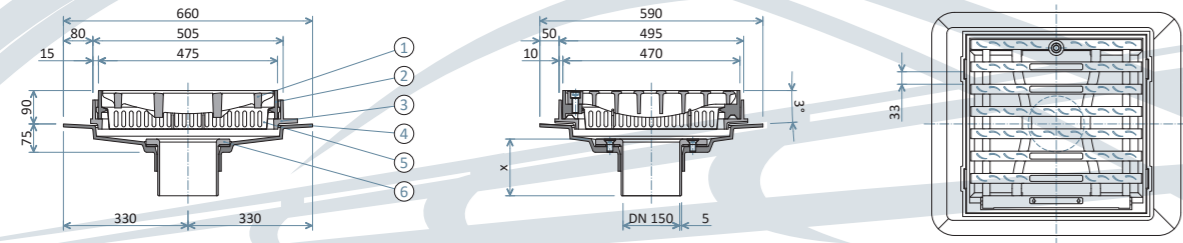


*only vltava@I

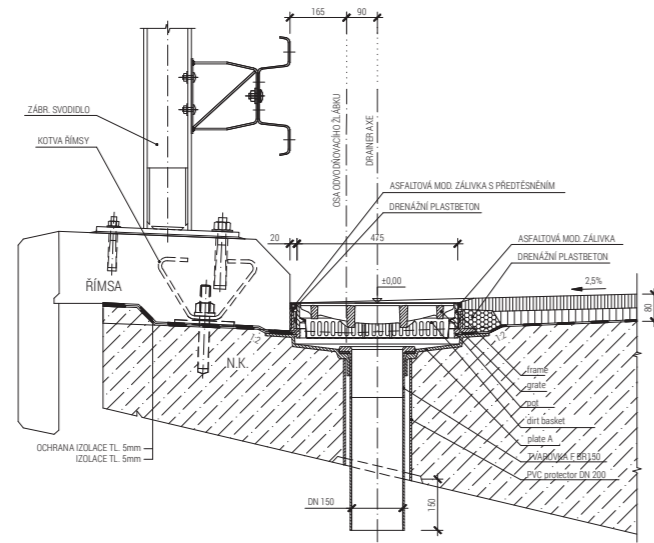
- new design of gully grate, load D 400, thinner ribs prevent clogging
- anti-skid protrusions on top of grate, inlet area of grate 860 cm²
- grate and frame are joined by hinge, locked by imbus screw
- pot is equipped with grooves for draining of isolation surface
- tracks inside pot enables diagonal rectification (only vltava@I)
- position of frame in diagonal direction is fixed by shuttering bars (only vltava@I)
- rim width 80 mm
- drainer is equipped by dirt basket



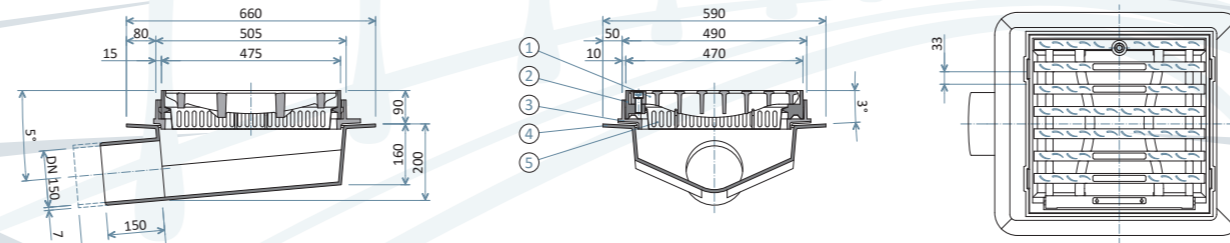
vltava® II type A (code VS 2162-A)
with flange fitting F-BR DN 150, length as required



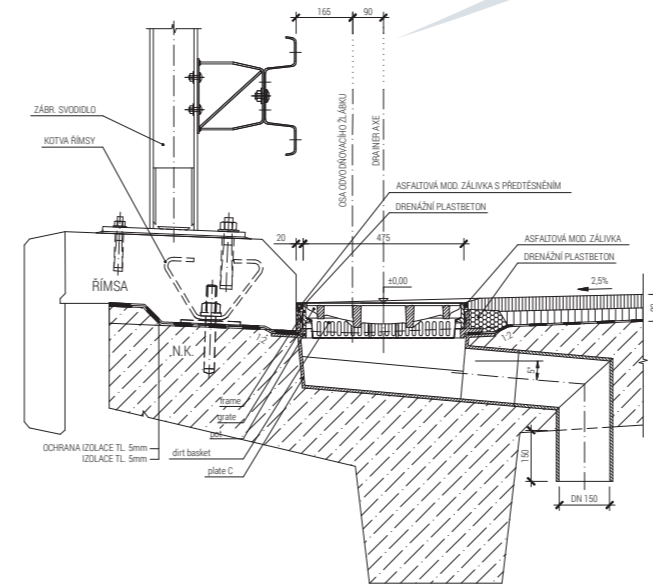
Legend ① grate with hinge ② frame ③ pot ④ plate ⑤ dirt basket
⑥ flange fitting F-BR DN 150 with gasket and screws



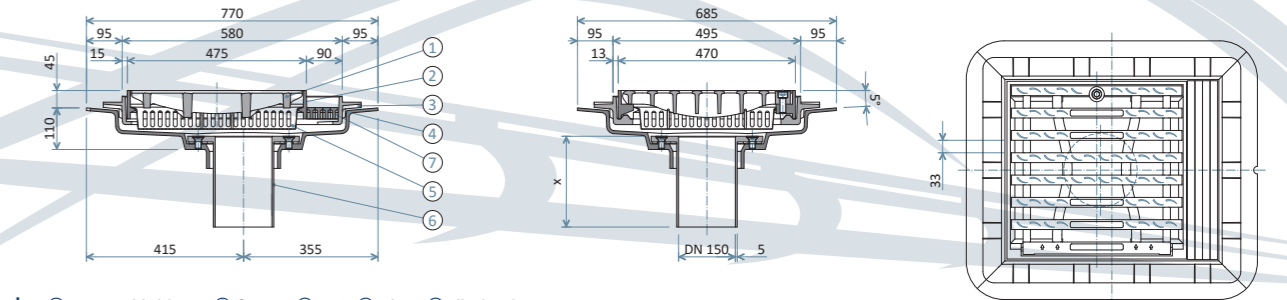
vltava® II type C (code VS 2162-C)
sloping outlet DN 150, base length 150 mm, slope 5°



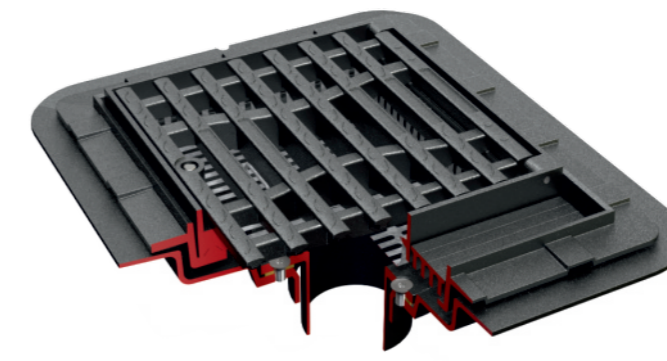
Legend ① grate with hinge ② frame ③ pot ④ plate ⑤ dirt basket



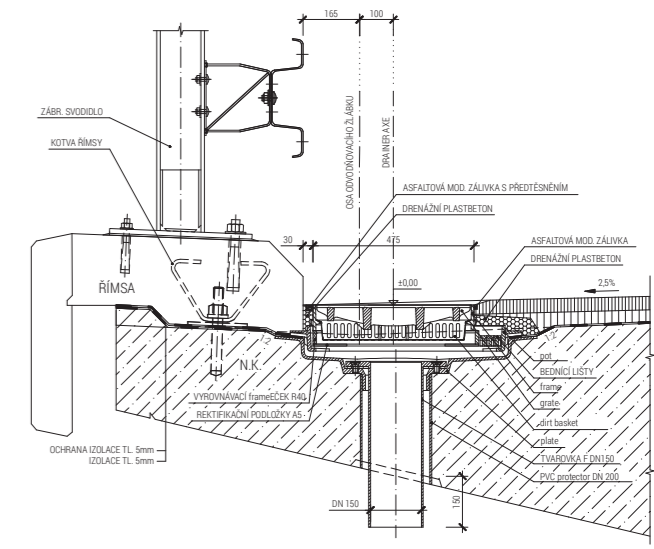
vltava® I (code VS 3162)
with flange fitting F DN 150, length as required



Legend ① grate with hinge ② frame ③ pot ④ plate ⑤ dirt basket
⑥ flange fitting F DN 150 with gasket and screws
⑦ shuttering bars

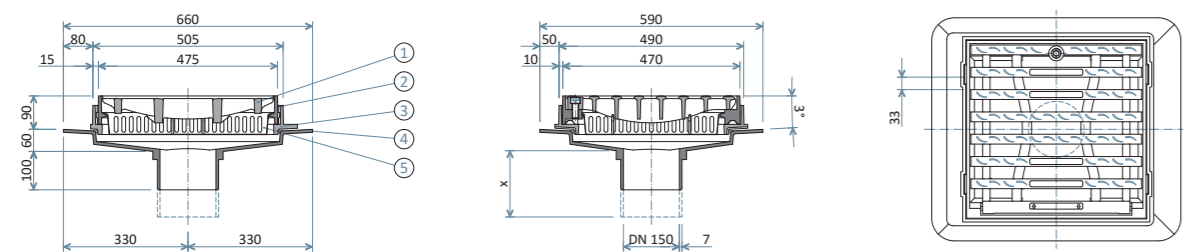


Note: possibility of cross rectification

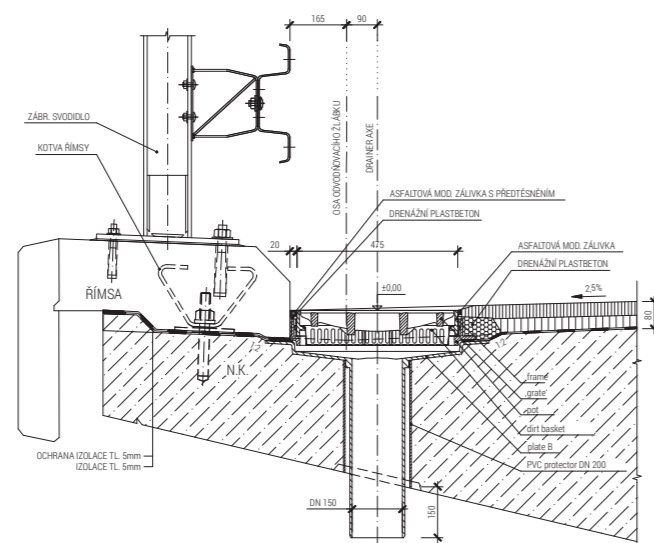
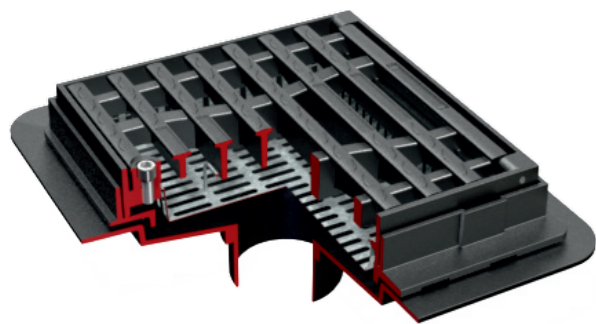


ACCESSORIES

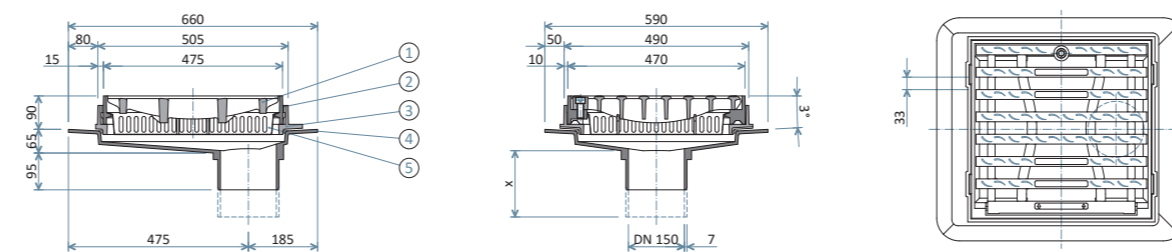
vltava® II type B (code VS 2162-B)
straight vertical outlet DN 150, base length 100 mm



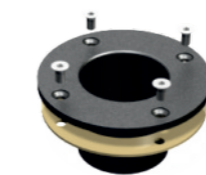
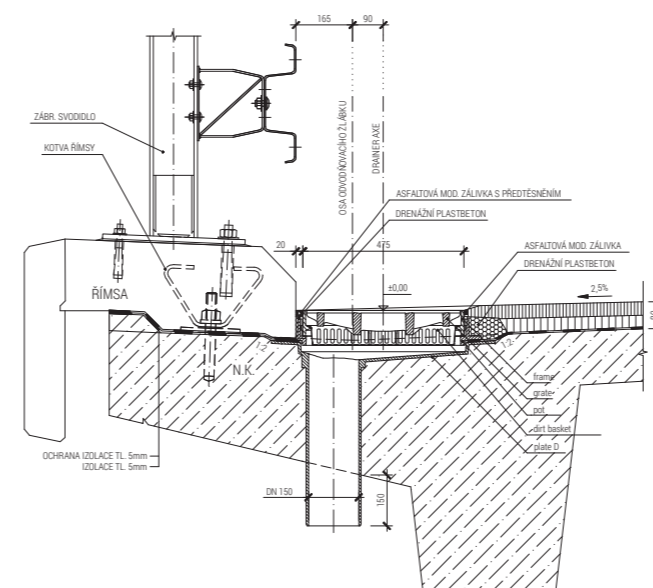
Legend ① grate with hinge ② frame ③ pot ④ plate ⑤ dirt basket



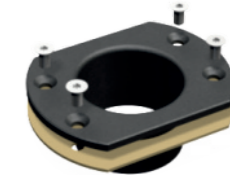
vltava® II type D (code VS 2162-D)
straight excentric outlet DN 150, base length 95 mm



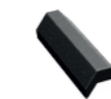
Legend ① grate with hinge ② frame ③ pot ④ plate ⑤ dirt basket



flange fitting F DN 150
(for vltava® I)
including gasket and screws
length as required



flange fitting F-BR DN 150
(for vltava® II)
including gasket and screws
length as required



rectifying underlays
A5, A10, A15, A20



rectifying frames



rectifying threaded stick
stainless steel, M12/70 mm
(included in delivery)



rectifying threaded stick
with pad
stainless steel, M12/70 mm
(included in delivery)



dirt basket
galvanized sheet metal
(included in delivery)



wrench