



CE marking

applying to cast iron
wastewater systems...

*Let's collect our
thoughts*



CAST IRON WASTEWATER PIPE SYSTEMS

CE marking is arriving on

Why must wastewater systems be CE-marked?



In order to meet the European Directive for Construction products which applies to all products intended for permanent incorporation in a construction project (building or civil engineering works).

European Directives are community-wide regulations that apply to all the member states. The idea is to **allow for free circulation** of industrial products within the European Union, **while guaranteeing the safety** of European consumers and users of the products.

CE marking enables national customs authorities to identify which products meet the essential safety requirements and can therefore be allowed pass into the European Union and between member states.

Essential requirements for Construction Products. They cover public health, safety and consumer protection:

- 1- Mechanical strength and stability
- 2- Fire safety
- 3- Hygiene, health and environment
- 4- Safety of use
- 5- Protection against noise
- 6- Energy performance and thermal efficiency



The European Directive is based on:

- An obligation to **meet identical essential safety requirements** throughout the European Union and the European Economic Space.
- References to **harmonised European standards (EN)** for the technical specifications of the product (standard EN877, cast iron pipes, fittings and couplings for wastewater systems).

The **CE marking** on a product certifies that said product complies with the harmonised part of the reference Standards and is a minimum precondition to be able to place the product on the market.

Two objectives:

- **to improve** the regulation of **market controls** in order to protect consumers against dangerous products
- **to strengthen trust** in products sold in the EU through a common legal framework.

Based on EN877 , CE marking will become mandatory on cast iron wastewater products leaving the factory, from 2009 September the 1st.



our markets...

What will the arrival of CE marking change for

Cast iron over plastic systems

Cast iron remains one of the best materials when it comes to Fire Safety

The Euroclass are based on test methods and establish a reaction to fire classification that are harmonised throughout Europe. This means that they can be used to compare materials and product performances.

SAINT-GOBAIN PAM cast iron is among the safest materials on the market in terms of reaction to fire and its systems offer one of the most comprehensive guarantee.

Safety

The Euroclass classification ranges from A1 to F, with A1 and A2 being reserved for products that are not, or only slightly, combustible.

The indices s and d refer respectively to smoke emission and the production of burning droplets. For both of these criteria, the SAINT-GOBAIN PAM products achieved the highest possible scores: s1, d0

Sub-Class SMOKE production

- s1: Low smoke production
- s2: Medium smoke production
- s3: High smoke production

FLAMING DROPLETS sub-classification

- d0: No flaming droplets
- d1: Flaming droplets that persist for less than 10 s
- d2: Flaming droplets

EUROCLASSES			Former French classification
A1	-	-	Incombustible
A2	s1	d0	M0
A2	s1	d1	
A2	s2		
A2	s3		
B	s1	d0	M1
B	s2	d1	
B	s3		
C	s1	d0	M2
C	s2	d1	
C	s3		
D	s1	d0	M3
D	s2	d1	M4 non gouttant
D	s3		
Classes other than E-d2 and F			M4

Scope

The CE Marking for cast iron wastewater systems is based on the harmonised standard EN 877, which applies to a system including pipes, fittings, couplings and accessories — and is used to test all of the components in the ranges.

The cast iron material alone is classified A1 in the Euroclass classification of reaction to fire, without prior tests.

The classification obtained by SAINT-GOBAIN PAM covers complete ranges — pipes, fittings, couplings and accessories, components of a wastewater pipe system. A first for a manufacturer till this day

The tests carried to determine the ranking for “burning droplets” and “smokes” included in the assembly elastomer gaskets and coatings. The excellent following ranking was obtained: **A2-s1,d0**

Check the reaction to fire classification of the products you specify, and be sure that the tests were undertaken by an accredited laboratory.



specifiers of wastewater pipe systems?

SAINT-GOBAIN Cast iron vs other cast iron systems

Proof of conformity with EN 877

Standard EN 877, which defines the requirements for cast iron wastewater pipe systems, is a **self-declared standard**. This means that the manufacturer is allowed to self declare that his product complies with this standard.

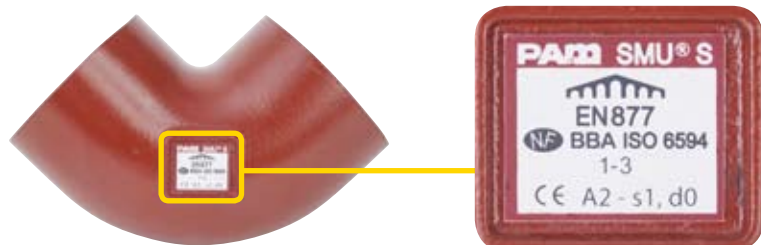
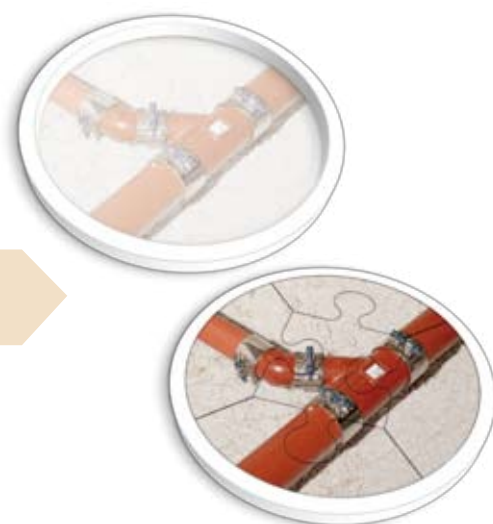
The customs and commercial documents relating to CE marking appear to certify the conformity of all the items of EN 877 that are mentioned. But the rules applying to proof of conformity have not changed.

To obtain CE marking based on Annex ZA of EN 877, a third-party laboratory certificate is necessary only with regard to reaction to fire:

- 1- Do not hesitate to compare the reaction to fire classifications.
- 2- Bear in mind that the manufacturer is entitled to run in-house tests and self declare compliance to the Standard on other criteria.

Only compliance with **EN 877**, that is validated by a third party for all criteria and periodically tested can guarantee the performance of the systems you specify

Look for cast iron products fully complying with EN 877 and bearing a complete quality mark, like NF in France, delivered by an accredited certification body. It will prove that the said products meet all the specific national requirements.



our markets...

CE marking is not a Quality mark or label

It is something very different

Voluntary markings: they add value to the product in terms of customer-supplier relationships. Their scope mainly aims at fitness for purpose.

CE marking: It is intended mainly for the authorities in charge of market control. Its scope is limited to health and operation safety.

In the special case of wastewater pipe systems, only Fire safety has been selected as an essential requirement. For cast iron systems, the tests and technical specifications are defined in the amended standard EN 877, chapter "Reaction to fire".

In tests conducted by the CSTB accredited laboratory, the SAINT-GOBAIN PAM cast iron ranges received the following classification for reaction to fire:

A2-s1,d0

SAINT-GOBAIN PAM has deliberately decided to mention this classification on its products.

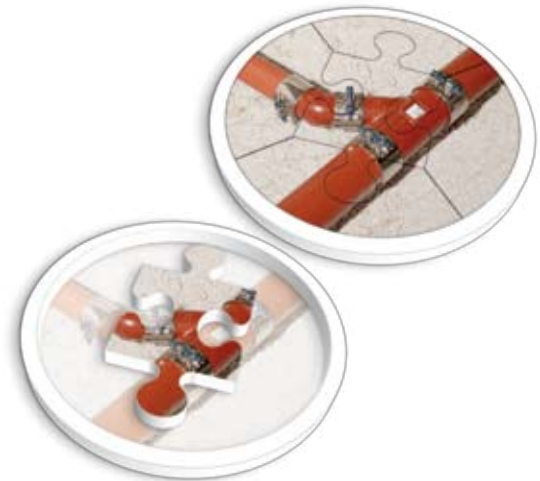
Scope	EN 877 harmonised	
	CE marking	Complete Quality mark French NF for example
Tests		
Reaction to fire (Range)	A2-s1,d0	●
Internal pressure strength	●	●
Dimension tolerances	●	●
Impact resistance	●	●
Tightness	●	●
Durability Internal coating	●	●
Durability External coating	●	●



● Third party certification not made compulsory by EN 877

● Third party certified

Making the choice of a complete and consistent range of cast iron products, whose assembly has been performance tested against regulatory requirements, provides you with a peace of mind that few other materials can guarantee.





SAINT-GOBAIN PAM
Head-Office
91, avenue de la Libération
54000 Nancy

Building Activity
12, rue Nicolas Noël
54460 LIVERDUN CEDEX
tél : +33 (0)3 83 84 29 01
www.pambatiment.com